

Operation and Assembly Manual

for the

EarthWay® M80 12-volt Broadcast Spreader



When applying heavy materials like ice melt, you must remove the agitator.

WARRANTY

EARTHWAY guarantees this product to be free of defects in original workmanship and materials for a period of 90-days from sale to the original user. If any defect develops during this period EARTHWAY will repair or replace this product or part at no charge provided the defect is not the result of mishandling or tampering. If advised by EarthWay that the product or part is to be returned, the shipping charges must be prepaid to EarthWay Products, Inc. 1009 Maple St. Bristol, IN 46507. For quicker service you may call EARTHWAY at (574) 848-7491 or write and describe the nature of the defect and we will send repair parts to you.

Due to the corrosive nature of most fertilizers and ice melters, EARTHWAY PRODUCTS, INC. makes no warranty or guarantee against corrosion failure on models with plated steel or painted steel frames. Clean and dry your spreader thoroughly after each use. Warranty covers parts only, not labor charges for the repair or replacement of the parts.




EarthWay®

Electric Spreaders

Models M80

1. Always wear protective clothing, eyewear, and dust mask to prevent contact with chemicals and other materials being applied with this machine.
2. Remove any material in the hopper before lifting or detaching this machine from the vehicle.
3. Care must be taken when lifting this machine so as not to cause personal injury or equipment damage. Never attempt to install this machine to the vehicle alone. Recruit the help of someone to assist when attaching and detaching this machine from the vehicle.
4. Refer to the material packaging or the Material Safety Data Sheet for precautionary measures required when handling materials to be applied.
5. Before attaching this machine, consideration must be given to the load capacity of the vehicle. Refer to the owner's manual of the vehicle for rated load capacity. Be sure to take into account the weight of this machine **30lbs.** and the weight of the material to be placed in the hopper when calculating the total load.

WARNING



KEEP HANDS AWAY FROM ANY SPINNING OBJECT, SHUT-OFF PLATE, SOLENOID LINKAGE, AND THE INSIDE OF THE HOPPER, EXTREME INJURY CAN OCCUR.

HOW TO OPERATE SAFELY:

1. Read, understand, and follow all product label information provided on the material being applied.
2. An adjustable solid stop is provided that allows the operator to adjust to the desired opening position on the rate setting control prior to operation of the vehicle. This allows repeatability to the stop without the need to look at the control while operating the vehicle.
3. Establish the correct rate and then lock the stop in that position using the thumb wing nut on the setting control.

MOUNTING INSTRUCTIONS:

Position the M80 on the vehicle so that the vertical center frame brace is positioned at the edge of the vehicle, this will allow a full 180 degree spread pattern.

Shown in photo is a cross-bed mounting frame.

See page 4 for mount description.



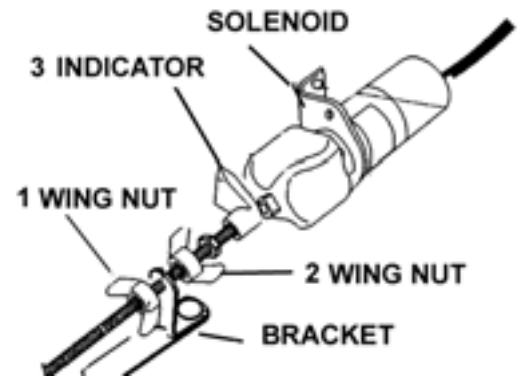


Use Caution ~ disconnect power supply.

OPERATING INSTRUCTIONS:

Before filling hopper, become familiar with the operation of this spreader.
(Practice the following steps)

1. Connect only the black wire (ground) to the negative (-) post on the battery. Connect the other two wires to the positive (+) post on the battery.
2. Turn the motor switch to the **ON POSITION**, so that the impeller is turning before going on to the next step.
3. While driving forward turn the solenoid switch to the **ON POSITION**, this opens the shut off plate on the spreader.
4. To stop the flow of material, turn the solenoid switch to the **OFF POSITION**, then turn the motor off when finished.
5. When finished empty any remaining material from hopper.
6. Thoroughly wash spreader and allow to dry before storing. No oiling is necessary.



CALIBRATION INSTRUCTIONS:



1. Remove power connect from the positive terminal on the battery.
2. Loosen # 1 wing nut.
3. Turn # 2 wing nut clockwise to reduce setting or turn counter clockwise to increase setting to desired hole opening. Setting 15 places the shut-off plate inside hopper to half open. By turning this wing nut, indicator will travel along side gauge.
4. Tighten # 1 wing nut firmly to lock calibration setting in place.

IF RATE SETTINGS ARE NOT AVAILABLE USE THE FOLLOWING PROCEDURE TO CALCULATE THE SETTING:

1. Determine how much material is to be applied per 1,000 sq/ft.
2. Measure off a distance of 50 feet, preferably on a paved surface such as a parking lot.
3. Weigh out enough of the material to be applied to fill the hopper at least half full. Record the weight for future use.
4. With the unit mounted on the vehicle and the hopper at least half full of the material to be spread, position the vehicle far enough before the beginning of the 50 foot test area so that the vehicle will achieve the desired speed before you reach the starting line.
5. Set the rate setting stop at a position that you feel would be an appropriate setting.
6. Start the vehicle in motion and as you cross the starting line (of the 50 feet) move the rate lever to the open position against the stop. Take care to be aware of what is going on around you maintaining control of the vehicle.
7. Continue from the starting line with the unit spreading the material. As you cross the finish line move the rate lever to the closed position.
8. Stop the vehicle and note the width of the spread path that was just completed.
9. Return to the start point and empty the remaining material from the hopper into your weighing container and re-weigh.

EarthWay[®]

Electric Spreaders

Rate Setting Worksheet

Desired Application Rate (lbs/1,000 sq ft) _____

To determine the desired application rate divide the area (sq ft) the bag should cover by the weight of the bag, then multiply by 1,000.

(example: 5000 sq ft / 25 lbs = .005 x 1,000 = 5)

_____ Weight of Material Placed in Hopper

- _____ Weight of Material Left in Hopper

= _____ Weight of Material Used

50 Length of Test Area

x _____ Width of Spread Area

= _____ Total Spread Area

Divide the Weight of Material Used by the Total Spread Area = _____ lbs/sq ft

Multiply the lbs/sq ft times 1,000 = _____ lbs/1,000 sq ft

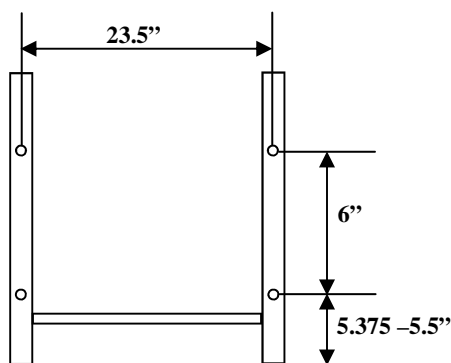
Compare the results of your test to the desired application rate.

Adjust the rate setting stop accordingly and run through the test again.

The settings furnished on the Rate Setting Chart are intended as a guide only. Variations in physical characteristics of material applied, brisk walking speed (3 mph.), and roughness of ground surface may require slightly different spreader settings. Due to the above conditions, EARTHWAY PRODUCTS INC. makes no warranty as to the uniformity of coverage actually obtained from the setting listed.

Mounting Systems

EarthWay recommends that the M80 be mounted into the bed of a vehicle or to a secure horizontal or vertical surface capable of holding a 500lb weight. The hole location dimensions for reference are shown below.



M80 Frame Detail



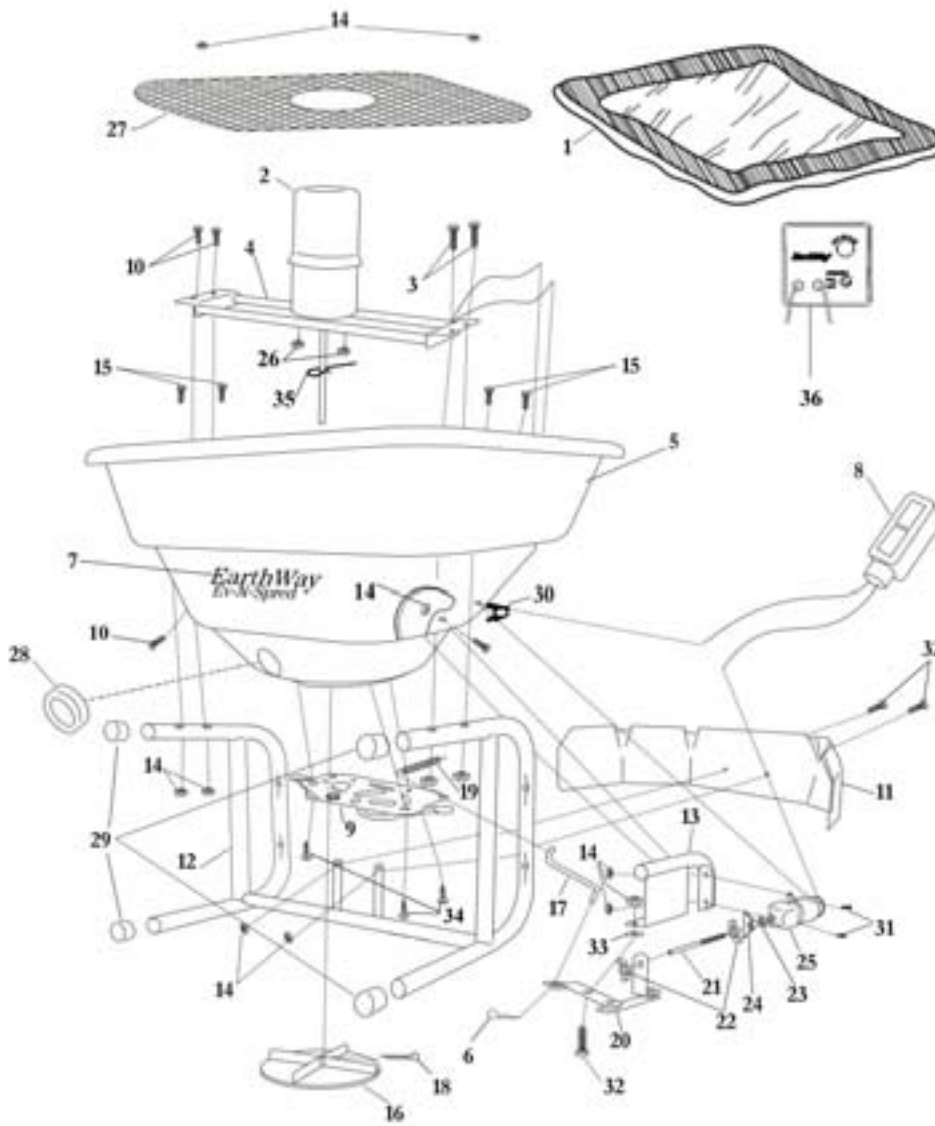
Custom Bed mount for Carrvall 1 Utility Cart.

The mount bolts securely to the top and the bottom of the side of the bed at the positions shown by arrows.

EarthWay®

Products, Inc.

P.O. Box 547
 Bristol, Indiana 46507
 (574) 848-7491
 www.earthway.com



HOW TO ORDER SPARE PARTS

All spare parts listed may be ordered direct from the manufacturer, **EARTHWAY PRODUCTS, INC.** Be sure to give the following information when ordering.

1. Model Number
2. Part Number
3. Part Description

Call (574)848-7491 or write for current prices.

M80 ~ Professional 12-volt Broadcast Spreader Rev 6-05

Key #	Part #	Description	Key #	Part #	Description
1	77052	Heavy Duty Rain Cover	20	60352	Linkage Assembly
2	77102	Electric Motor with Shield	21	42272	Adjusting Rod
3	N/A	1/4-20 x 1 3/4" SS Hex Head Bolt	22	60347	1/4-28 Wing Nut
4	60330	Motor Support Assembly	23	36305	1/4-28 Hex Nut
5	60409	Hopper Assembly Includes Key #9	24	12308	Indicator
6	36101	.080" x 1-3/16 Stainless Steel Hair Pin Clip	25	70189	Solenoid
7	53226	Vinyl EarthWay Logo	26	32116	10-32 Nylon Insert Locknut
8	60512	Wire Harness Assembly	27	12315	Square Debris Screen
9	12278	New Pro Shut-Off Plate	28	19170	Washout Port Cap
10	N/A	1/4-20 x 1" SS Hex Head Bolt	29	19168	Frame Tube Cap 1-1/4"
11	42276	Back Deflector	30	70207	Strain Relief
12	60408	Frame Assembly	31	36227	1/4-20 x 1" Slotted Head Stainless Steel
13	42275	Gauge	32	N/A	1/4-20 x 3/4" Hex Head Stainless Steel
14	36300	1/4 - 20 SS Nylon Insert Locknut	33	36400	5/8" O.D. x 9/32" I.D. Stainless Steel Washer
15	36228	1/4-20 x 2 1/4" SS Hex Head	34	31138	#8 X 3/8" PMT #8 HD Coarse Black
16	12109	Impellor	35	33117	Agitator
17	41276	Control Rod	36	77009	(Optional) Motor Speed Control
18	36105	1/8" x 1 1/4" Cotter Pin		60513	(Optional) Truck Mount Wire Harness w/ Lighter Plug
19	70182	Extension Spring			N/A - can be found at most local hardware stores



EarthWay Products, Inc.
P.O. Box 547
Bristol, Indiana 46507
USA

EC DECLARATION OF CONFORMITY

(Machinery Directive & Electromagnetic Compatibility Directives)

Herewith we declare that the machinery described below is in accordance with the relevant health and safety requirements of the EC Council Directives concerned with Machinery and Electromagnetic Compatibility. No alterations are to be made to the machine without prior consultation and approval of EarthWay Products, Inc. otherwise the Declaration may become invalid. This equipment must be commissioned, used and maintained strictly in accordance with the operating and maintenance instructions issued with the machine. Operators must be trained in accordance with the recommendations given in the operating and maintenance instructions issued with the machine.

Description of Machine: EarthWay M80 12-volt Broadcast Spreader

Serial Number: AS STAMPED ON MACHINE


Date of Supply: AS INVOICED DATE

Relevant EC Council Directives:

Machine Directives 89/392/EEC and subsequent amendments.

Electromagnetic compatibility Directive 89/336/EEC and subsequent amendments.

Issued by: Jeffrey D. Kendall on behalf of EarthWay Products, Inc.

Signed by: 

Date: 21 May 2006

Position of Signatory: Vice President
Sales & Marketing

DO NOT RETURN TO DEALER FOR REPAIR

EARTHWAY PRODUCTS, INC.
1009 Maple Street
P.O. Box 547
Bristol, IN 46507

FOR YOUR RECORDS

Date Purchased: _____
Store Name: _____